

# **STICKNEY NEWS**



**St George's Day – 23 April  
Patron Saint of England**

# **APRIL 2024**

## I Wish I Had a Dragon

By: Shel Silverstein

I wish I had a dragon  
With diamond-studded scales,  
With claws like silver sabers,  
And fangs like silver nails,  
A dragon fierce and faithful,  
Always ready by my side,  
A dragon to defend me  
Or take me for a ride.

I wish I had a dragon  
With eyes of shining gold,  
Who breathed a plume of fire  
Whenever it was told,  
A dragon so ferocious  
It might frighten Frankenstein,  
But not a lazy dragon  
Who sleeps all day . . . like mine!



On the last Thursday of each month the Parish Council Clerk will be available at the coffee morning at St Luke's Church from 10.00am.



**The mobile Post Office**  
will visit Stickney  
in the Youth Centre Car Park  
on  
**Monday's and Tuesday's**  
**10.15am – 11.15am**

# **St Luke's Church**

## **Services for the Stickney Cluster during April at 11.15am**

Sunday 07 April	Stickney	St Luke's	Service of the Word
Sunday 14 April	Stickford	St Helen's	Holy Communion
Sunday 21 April	Stickney	St Luke's	Holy Communion
Sunday 28 April	Stickford	St Helen's	Service of the Word

**Everyone is welcome to attend any service at either church**

**Refreshments are available**

### **Prayer requests**

If you would like prayers said in church for you at a time of illness or upheaval this can be arranged. If the request is for another person, the prayers will not be said in public for confidentiality reasons. Contact the clergy listed below.

**Everyone is always welcome to join us**

The contact details for Rev Fran Jeffries are:

Tel: 01790 752526

Email: [fran.jeffries@lincoln.anglican.org](mailto:fran.jeffries@lincoln.anglican.org)



### **Coffee Morning**

Thursday's 10.00am - 11.00am

St Luke's Church

All welcome



## **STICKNEY OUTDOOR BOWLS CLUB**

opens on

MONDAY 08 APRIL 2024

Everyone is very welcome – both members and non-members

Please come and join us on **Monday evenings**

at **6.00pm for social/fun bowling**

The Club also has inter-club competitions for anyone to take part in

For more information please contact:

Humphrey Wragg on 01205 481221 or 07484 719349

or Will Edwards on 07966 243132



**A SPORT FOR ALL AGE GROUPS**

## **MOBILE LIBRARY VISITS**

The mobile library visits Stickney on **THURSDAY'S** at:  
the Youth Centre between 12.00noon and 12.30pm outside  
William Lovell School between 1.15pm and 1.45pm

and at

Horbling Lane between 2.00pm and 2.30pm

**The next visits will be 25 April and 23 May**



# Kiddies Corner

**Strawberry Eton Mess** is an easy and classic British Dessert that's made with strawberries, whipped cream, and meringue cookies. The flavour is so bright and the strawberry syrup cuts the sweetness perfectly. It comes together quickly and is always a crowd-pleasing summer dessert.

## **Ingredients**

**Meringue** – you'll need about 3 nests.

**Strawberries** – sliced or quartered

**Lemon** – make sure to zest the lemon then squeeze the juice.

**Sugar** – to sweeten the whipped cream and strawberry mixture. If your strawberries aren't very sweet, you can add more sugar.

**Double cream** – beat until thickened and keep in fridge until required.



## **Assemble the Eton Mess**

**Crush the Meringue** – Set your meringue into a zip-top bag and crush them into course crumbs with a rolling pin or whatever gets the job done!

**Make Strawberry Topping** – In a bowl, add 2/3 of your sliced strawberries along with the lemon zest, lemon juice, and 2-3 Tbsp of sugar depending on the sweetness of your strawberries. Mash the strawberries into a chunky consistency. Stir in the remaining 1/3 of your strawberries and add more sugar to taste if needed.

**Double Cream** – take from the fridge

Add your ingredients to clear drinking glasses, or serving dish of choice. Spoon some cream into the bottom, top with a heaped spoonful of the strawberry mixture, add crumbled meringue and repeat with cream, fruit, and meringue to fill the cup. Serve right away or cover and refrigerate for up to 3 hours.

\*\*\*\*\*

## **St George's Day Celebration Around the World**

Interestingly, St George is also the patron saint of Canada, Greece, Portugal, and, of course, Georgia in Europe (near to his birthplace).

In each case the legend of St George slaying the dragon is part of that country's folklore.

However, England is one of the few countries that does not have a national holiday on its Saint's day.





# **STICKNEY PARISH COUNCIL**

REQUIRE **ONE**

## ***PARISH COUNCILLOR***

There is currently one vacancy on the Parish Council and the position is to be filled by co-option.

Applicants must meet at least one of the following criteria:

- a. Be registered as a Local Government Elector for the Parish on the current Electoral Register
- b. Has during the whole of the previous 12 months occupied as tenant or owner any land or other premises in the Parish
- c. Has had his/her principal or only place of work in the previous 12 months in the Parish
- d. Has resided either in the Parish or within 3 miles thereof during the previous 12 months

If you are interested in becoming a Parish Councillor then please apply, in writing, to the Clerk:

Mrs E L Arnold  
Crookes Cottage  
Wrangle Bank  
BOSTON  
PE22 9DL

Or email: [stickneypc@aol.com](mailto:stickneypc@aol.com)

For more information contact the Clerk on 07466 656980

### **Bingo at Stickney Youth Centre**

on Friday evenings

Doors open 6:45pm eyes down 7.30pm.



# STICKNEY & DISTRICT GARDENING CLUB

The next meeting is on Tuesday 23 April 2024

This is a trip to:

**'Greenaway Composting' at Strubby**

Leaving the Village Hall at 4.30pm  
returning for tea, coffee and a chat  
Car sharing where possible

Annual membership is £20.00 per person

**NEW THIS YEAR:** £30.00 per couple, £5.00 per under 18

Coming back to Stickney this Year  
The Return of the

**STICKNEY & DISTRICT ANNUAL SUMMER SHOW**

For further information please telephone:

Soo: 07584 426830

*All are welcome to this friendly club*

# QUIZ NIGHT

**Saturday, 27<sup>th</sup> April**

RAFFLE

Stickford Community Centre

Doors open 6:45pm, Quiz at 7:30pm

£3 per person / 4-6 persons per team

Prizes to the winning team

Refreshments available before and midway

You may also bring your own drinks & nibbles

**All proceeds to go to 2 Stickford charities**

Being organised by the Stickford Defibrillator Group

To enter your team please contact Jennie on 07966 139641





**LINCS & NOTTS**  
**AIR AMBULANCE**  
**SAVING LIVES EVERYDAY**

## **Knitting up a storm for Lincs & Notts Air Ambulance**

As part of the 30th Anniversary celebrations due to start later in the year, Lincs & Notts Air Ambulance (LNAA) are calling all nifty knitters to join together to create the largest yarn bomb ever seen!

The charity's aim is to cover the whole of Lincolnshire and Nottinghamshire with hundreds of yellow helicopters and spread the message about their life-saving work. To do this we need knitters and crocheters to help create this mammoth masterpiece.

There are three ways people can take part:

1. Individual knitters can create a single mini helicopter and display it in a local shop, pub, church, or other community space.
2. More adventurous knitters are being asked to let your imagination soar and design a unique, eye-catching postbox topper, just make sure it includes a yellow knitted helicopter!
3. The ultimate challenge is to yarn bomb your community and join forces with fellow knitters to create a cornucopia of colour.

LNAA's Volunteer Manager, Kate Kerrigan said: "This is a fabulous way to support the life-saving work of Lincs & Notts Air Ambulance from the comfort of your own home. With your help, we are looking to colour the counties of Lincolnshire and Nottinghamshire yellow with thousands of miniature helicopters.

It is so easy to get involved. Just grab your knitting needles and some yellow yarn and register your interest with Lincs & Notts Air Ambulance at:

**[ambucopter.org.uk/knitting](http://ambucopter.org.uk/knitting)**

We will then send you your knitting pattern which designer Amanda Berry has kindly allowed us use as well as lots of information to help you get involved.

## **ABOUT Lincs & Notts Air Ambulance**

It is thanks to the generosity and goodwill of supporters throughout the area that the crew of Lincs & Notts Air Ambulance can provide such a critical care.

The highly skilled doctors, paramedics and pilots help people across Lincolnshire and Nottinghamshire, involved in life-threatening incidents every single day.

LNAA is one of the UK's leading Helicopter Emergency Service (HEMS) charities, bringing the equivalent of a hospital emergency department to patients at the scene, giving those with the most severe injuries and medical conditions the very best chance of survival when minutes matter.

In 2023, LNAA was tasked to **1,771 incidents**, over **151 more than in 2022**.

- **£10 million:** The current cost of funding to keep the service operational each year.
- **169:** Thanks to tremendous public support, we fly an AgustaWestland 169 helicopter – a top of the range Helicopter Emergency Medical Service (HEMS) aircraft offering head to toe access to patients in flight. Our crew also carry blood on board, allowing them to deliver potentially life-saving blood transfusions at the scene.
- **25,755:** The number of missions Lincs & Notts Air Ambulance has flown since the service began operating in 1994.
- **£4,000:** The average cost of each mission.
- **24/7:** We provide a 24-hour service, 7 days a week, 365 days of the year, enabling our clinical crew to give more people than ever the very best chance of survival. This level of care ensures that we are at the forefront of Helicopter Emergency Medical Services in the UK.
- **3,500:** The number of square miles the service covers across Lincolnshire and Nottinghamshire.
- **2,500,000:** The number of people Lincs & Notts Air Ambulance have provided medical support to across Lincolnshire and Nottinghamshire
- **216mph:** The aircraft can reach a top speed of 216mph and has a cruising speed of 180mph
- **20:** The number of minutes it takes the air ambulance to reach the furthest point in the catchment area of Lincolnshire and Nottinghamshire.
- **Four:** The average number of missions the crew are tasked per day.



## **Gardening Tips for April:**

As I write, we are looking forward to the Vernal equinox when Spring officially starts on the 21st March. There is still no real sign of the weather turning warmer, or more importantly, drier. Nevertheless, the gardening year has well and truly started, so it is time to fill up propagators and begin to sow and plant in earnest. Here then are a few suggestions as we await the arrival of warmer and drier days.

- 1} Second early potatoes should be being chitted now ready to plant out in early April, with maincrop potatoes in the second half.
- 2} If you have managed to cover the soil with cloches or plastic sheeting, then an early sowing of beetroot, carrots and perpetual spinach would be a worthwhile activity.
- 3} Indoor sowings of marrows, courgettes and sweet peppers will enable planting when the soil in the garden is well and truly warm.
- 4} Lettuce is a very good stand-by during the summer and into Autumn. The seed is best sown under cover in modules and planted out when large enough to handle, thus giving them a head start on slugs and snails. However, received wisdom seems to favour encouraging slugs and snails in the garden as they are good for the eco-system. I'm still to be convinced.
- 5} Peas can be sown now and will be ready for harvesting from early summer. Mice love the seeds, so this can be a problem in sowing directly into the ground. To overcome this, sow them indoors and plant outside when a few inches tall.
- 6} Radishes give almost instant gratification and are a great way to introduce children to vegetable gardening' They are quick to germinate and quick to mature' Thus it is best to sow them little and often for a continuous supply through the summer.

In conclusion, a word of wisdom for those of us who don't always get the results we hope for in our gardening endeavours:

**"There are no gardening mistakes, only experiments."**

Janet Kilburn Phillips, who is an expert in cottage gardening

**Happy gardening**





**J a m i e   R o b i n s o n**  
Injury & Rehabilitation Clinic

**Are you in pain?**  
**If the answer is yes, a sports**  
**therapist may be what you need.**

Assessment - Consultation - Joint Mobilisation  
Advanced Sports Massage  
Tailored Rehabilitation Programme  
Mobile Treatments - Fully Insured

 07955 676526

 [www.jamierobinsonirc.co.uk](http://www.jamierobinsonirc.co.uk)



CALL NOW  
TO BOOK YOUR  
VIEWING TODAY



## STICKNEY CHASE



Our distinguished new development of three and four bed detached homes at Stickney Chase is designed to deliver in both character and quality. The Ludlow, The Ancaster and The Coningsby are exceptional, contemporary, and imposing properties offering a selection of kitchen styles with integrated appliances included as standard.

Built with modern materials for that all important energy efficiency to exacting modern standards by Lindensium Homes

CALL NOW TO BOOK YOUR VIEWING TODAY

**01775 766888**

[info@arkpropertycentre.co.uk](mailto:info@arkpropertycentre.co.uk)



**LINDENSIUM**





# Stickney Church of England Primary School

“LEARN, ENJOY, ACHIEVE”

**Executive Headteacher: Mrs R. Cotton**

Main Road, Stickney, Boston, Lincolnshire, PE22 8AX

**Telephone: 01205 480254**



## At Stickney Church of England Primary School we offer;

- Quality education with experienced teachers & support staff
- Excellent Early Years provision
- Nursery provision from 2 years old *funded and non-funded places available all year*
- Hot nutritious meals cooked onsite in our Tree Tops Kitchen
- Bright and spacious classrooms
- Large attractive grounds with a nature area, growing allotment and peace garden
- Wraparound childcare through our Breakfast and Kids Club (8:00 – 18.00)

**Come and see for yourselves!**

We are conveniently situated on the A16 between Spilsby and Boston.

**Please contact us to arrange a look around *phone 01205 480254 to book in.***

Nursery place enquiries should be made directly to the school.

Online applications for Reception admissions are made through

Lincolnshire County Council.

# PIROUETTE

## SCHOOL of DANCE

SPILSBY

**A FUN & FRIENDLY DANCE SCHOOL**  
CHILD CLASSES START FROM AGE 3 FOR BOYS & GIRLS

PRIVATE WEDDING DANCE CLASSES AVAILABLE.

BALLET, POINTWORK, MODERN JAZZ,  
TAP, HIP/HOP, STREETDANCE, CONTEMPORARY,  
ACRO, GYMNASTIC/TUMBLE

**1 TO 1 PRIVATE CLASSES AVAILABLE**

**DAY TIME OR EVENING**

**ADULT CLASSES**

**TAP, MODERN JAZZ,  
FREESTYLE, HIP/HOP**

**I.D.T.A. EXAMS AND SHOWS  
PERFORMED IN A THEATRE**



***NEW intake now, limited places available***  
***So book your place to avoid disappointment.***

**CRB CERTIFIED, IDTA QUALIFIED TEACHER  
FOR OVER 20 YEARS.**

**PLEASE CALL TINA STOCKDALE A.I.D.T.A.**

**on 07444666114**

**email : [tinastockdale@outlook.com](mailto:tinastockdale@outlook.com)**

**FIRST CLASS FREE**



# Euro-Tech Innovations

Computer Sales & Repairs



Custom Built Computers  
Computer Repairs  
Computer Upgrades  
Internet Security Advice  
Laptop Repairs  
Laptop Screen Replacements  
Secure Computer Disposal

All work carried out in your home or business where possible.

**Tel: 0785 266 0929**

[www.et-innovations.com](http://www.et-innovations.com) [sales@et-innovations.com](mailto:sales@et-innovations.com)



NATHAN HOBSON BUILDING & FIREPLACES

# NH

 @NATHANHOBSONBUILDING

 @FUTUREFIREPLACES

**07506 780801**

[www.nhbuildingandfireplaces.co.uk](http://www.nhbuildingandfireplaces.co.uk)

   Find us on  
Facebook

**FIREPLACES ★ STOVES ★ CHIMNEY LINERS  
TWIN WALL FLUE SYSTEMS ★ SERVICING ★ REPAIRS**





# Tree Services Ltd.

FOR ALL YOUR TREE & HEDGE REQUIREMENTS

**Full licensed & insured for  
Private & Commercial work**

- Tree Removal ■ Pruning
- Logging ■ Chipping
- Hedge Trimming/Removal
- Emergency Tree Work
- Chipper Hire
- Chipper Hire (with Man)
- Stump Grinding
- Tree Work using M.E.W.P.
- Full NPTC & Lantra Certificates

*Please call Chris on :*

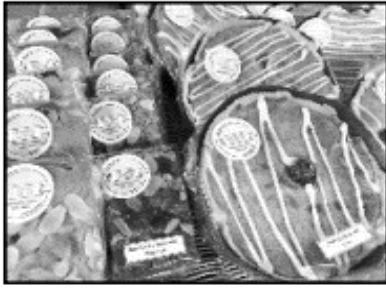
**Tel. 07973 778031 or (01205) 480066**



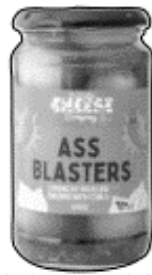
**e.mail [catreeservices@hotmail.com](mailto:catreeservices@hotmail.com)**







Your Local, friendly animal supplies and Farm shop.  
We pride ourselves on giving our customers the best possible value and service



Animal Feed & Supplies

Free Range Eggs  
Hot & Cold Drinks  
Cheeses & Snacks  
Baked Goods  
Fresh Fruit & Veg  
Jam & Honey  
Gifts & Cards  
& Much more



We stock items from over 20+ local small businesses  
**Old Generals Farm, West Fen Lane, Stickney, PE228BY**  
Find us on Facebook or call 07879 195862  
Hours: Mon,Tues,Thur,Fri 9.30-6pm /Sat10-4pm/Sun10-2pm/CLOSED Weds





# Upcoming Events

April Thursday Roast – Thursday 11<sup>th</sup> April  
£15pp, two course lunch with unlimited tea, coffee or squash  
Under 12s £6.95 for two course, under 3s £3.50  
Booking essential

---

Spring Craft Fair – Saturday 13<sup>th</sup> & Sunday 14<sup>th</sup> April  
10am – 3pm  
Free entry

---

Medieval Jukebox – Saturday 20<sup>th</sup> April  
An evening of magical music from Bard to The Beatles and Bach  
again, all played on Harp & Hammered Dulcimer.  
Doors open 7:30pm, Music from 8pm  
£12pp

---

Drumming Workshop – Saturday 20<sup>th</sup> April  
12pm – 3pm  
Booking essential

---

A night of fantastic Latin music at The Beonna  
Saturday 25<sup>th</sup> May  
£12pp

---

Our café is open every Friday from 9:30am to 2:30pm.  
Contact us on 07951 166575 , [events@thebeonna.co.uk](mailto:events@thebeonna.co.uk)  
Our office is open 5 days a week between 9am – 2pm



EMERGENCY TRADESMEN	TRADE	CONTACT DETAILS
Collin Buck CB Plumbing	Plumber (not boiler/heating engineer)	Tel: 07590 928896 reviews on <a href="http://Mybuilder.com">Mybuilder.com</a>
Chris Aikin Ca tree services Ltd	Tree surgeon & hedges	Tel: 07973 778031 <a href="mailto:catreeservices@hotmail.com">catreeservices@hotmail.com</a>
Michael Paul M Paul Construction	Qualified Builder	Tel: 07920 820909 <a href="mailto:m.paul.construction@gmail.com">m.paul.construction@gmail.com</a>
<p>If you would like to be added to this list, please email your details to  <a href="mailto:Stickneypc@aol.com"><b><u>Stickneypc@aol.com</u></b></a></p>		

If you would like to advertise in the Stickney News please send an email to [stickneypc@aol.com](mailto:stickneypc@aol.com) for more details.

## **KEALS CLUB**

**Visitors welcome.**

This meeting is open to everyone over the age of 50  
from all surrounding villages:

Afternoon tea and biscuits are provided

**Visitors are always welcome - £2.00**

The next meeting is on

**Tuesday 14 April at 2.00pm**

in the Community Centre, Stickford

**At this meeting Hannah Flowers will demonstrate  
'Spring at your Door'.**

On 09 April some members are going to Louth to the theatre but have spare seats on the coach if anyone fancies shopping for the day.

**Cost: £10.00**

**For more information please call Dawn on 07907 053128**

<b><u>WHATS ON IN STICKNEY</u></b>	<b>Village Hall</b>	<b>Youth Centre</b>	<b>Contact for information</b>
--	---------------------	---------------------	------------------------------------

### **Mondays**

Dog Training	10.00am - 11.30am		Nikki: 01205 480869
Community Cuppa		10.00am–12.00noon	Suzi: 07901 211220

### **Tuesdays**

Gardening Club 4 <sup>th</sup> Tuesday each month		7.00pm	Kay: 01205 480769
Badminton	7.00pm		Carol: 01205 761154 07786 162369

### **Wednesdays**

Indoor Bowls	1.00pm - 4.00pm		Clive: 01205 480344
Dog Training	7.00pm – 9.00pm		Nikki: 01205 480869

### **Thursdays**

Indoor Bowls	6.30pm – 9.00pm		Clive: 01205 480344
Parish Council Meeting 1 <sup>st</sup> Thursday each month		7.15pm Public Forum 7.30pm meeting	Clerk: 07466 656980

### **Fridays**

Bingo		6.45pm for eyes down at 7.30pm	Doreen: 01205 480397
-------	--	-----------------------------------	----------------------

### **Saturdays**

East Coast Bird Breeders Auctions (monthly)			Karen: 01507 442763
--	--	--	---------------------

**Stickford Ladies  
Social Circle**

On Monday 08 April  
The speaker will be Annette Sharpe  
Talking about  
**‘The history beneath our feet’**  
Start time is 1.30pm  
in the  
Community Centre  
Church Road  
Stickford  
**Visitors always welcome £2.00**

## NOTES FROM THE MEETING HELD ON THURSDAY 07 MARCH 2024

There were two members of the public present. They came along to ask about speeding traffic on the A16 and the issue of dog faeces on footways and garden fronts.

**Present:** Cllrs Pritchard, Jones, Pocklington, Hopkins, Sherriff and Edwards (Chairman)

**Also present:** County Cllr Bowkett and Dist Cllr Jones

**Apologies:** received from Dist Cllr Ashton

### **Co-opt a new Councillor**

There have been no applications for co-option

### **Reports from representatives on outside bodies**

#### **County Cllr Bowkett reported:**

The MP's in the areas affected by the proposed pylons are working with LCC and ELDC to get an alternative way to bring electricity onshore. In 2023 highways fixed 110,532 potholes, repaired 224 miles of road, rebuilt 11 miles of footway and cleaned 192,235 drains. £19m has been added to the highways budget. £4m has been added to the flood fund to help during storm conditions. An additional four jettors are to be purchased and four officers to help with co-ordinating help to residents. Anglian Water are continuing to investigate issues in Stickney and a report will be given in due course. **Residents with sewerage issues during the storms can claim a refund from Anglian Water and have their water bill reduced.** The surgery are looking into the issues of parking, LCC are trying to help with this issue. The footway at Horbling Lane will be re-surfaced.

#### **Dist Cllr Jones reported:**

ELDC is working alongside LCC against having pylons over the Wolds. Work to be carried out by the Pride Team should be arranged via the ELDC website. Rates have been increased by 3.6%, a cost of £4.95 to a band D property. 60% of the Council Tax goes to the Drainage Board which has increased its precept by 38% since 2021. District Councillors have had a pay increase of 6%. The planning application for the properties to the rear of William Lovell has been 'called in' for a committee decision.

### **Declarations of Interest**

There were no declarations of interest

### **Planning applications received**

**S/169/01928/21** - Mr M Cannon - Outline erection of 9 dwellings (with means of access, layout and scale to be considered) at Castle Rock, Main Road – Amendment - **SUPPORT**

**S/169/00072/24** - A R Craven Farms Ltd - Construction of vehicular access (works completed) at Land at Hagnaby Lock, East Kirkby - **SUPPORT**

### **Planning Decisions received**

**FULL** planning permission has been received for:

**S/169/01928/21** - Mr M Cannon - Outline erection of 9 dwellings (with means of access, layout and scale to be considered) at Castle Rock, Main Road – Amendment

### **Update regarding defibrillator at the Youth Centre**

The defibrillator has been delivered and taken to the Village Hall booking clerk. The booking clerk will work with the electrician who does the work at the Village Hall to get the defibrillator installed and the invoice will be sent to the Parish Council. An offer of £100.00 has been received from the Stickney Show Committee following the success of the New Year's Eve event in the village, towards the defibrillator. It was resolved that this could be used towards the installation cost.

## Play Area

One sign has been cleaned and the second needs a new Perspex cover. The pine needles will be removed from the toddler equipment.

**DO NOT USE THE LITTER BIN IN THE CHILDRENS PLAY AREA  
TO DISPOSE OF ANY DOG BAGS**

## Highways

The hedges by the footway by the school have not been cut back, it is now too late to do this. The storm drain covers are lower than the road surface causing issues for home owners along Main Road. Cones are being placed on the roadside outside the burger van when it is closed.

**Highway faults and repairs should be reported  
via the**

**'fixmystreet' app on your mobile phone**

Photos can be taken at the time of reporting

## Works that could be carried out by the ELDC Pride Team

These works need to be 'booked' via the ELDC website.

## Artwork for the bus shelter at Main Road

Two Councillors have visited the William Lovell to discuss this project. The teacher and some of the pupils will attend the April meeting to show the designs they have been working on.

## EV chargers and any possible infrastructure to improve local travel

A possible site for EV chargers would be the Village Hall, LCC would deal directly with the Village Hall Committee if this is regarded as a possible site. A cycle route between Stickney and Sibsey Northlands was requested some years ago. Improved bus service on weekdays – to get to Boston by 8.00am for example; have more than two buses on a Saturday into Boston and to have a Sunday bus service.

## Date of next meeting

The next meeting will be held on Thursday 04 April 2024 at 7.00pm in the Youth Centre, Hall Lane This will be followed by the Annual Parish Meeting where the speakers are hoped to be the Dog Warden and a representative from the Police.

The May meetings will be held on 09 May and will be the Annual Parish Council Meeting followed by the Parish Council meeting.

## **Math Riddles Answers:**

1. 16 legs (Legs of 2 kids = 4, Legs of 2 cats = 8, Legs of the driver = 2, Legs of the conductor = 2)
2. Three birds! (1 sparrow, 1 peacock and 1 woodpecker)
3. £25 (Cost of pen + Cost of notebook = £200; Cost of pen + (£150 + Cost of pen) = £200, Therefore - Cost of pen = 25)
4. There are 100 words in the book (5 x 2 x 10 = 100 words)



## USEFUL PHONE NUMBERS:

### **Parish Councillors:**

Cllr L Edwards (Chairman)	01790 763558
Cllr L Hopkins	07721 068645
Cllr K Jones	07483 898296
Cllr K Sherriff	01205 481261
Cllr N Pocklington	07795 594455
Cllr A Pritchard	01205 481156
Cllr A Gray	Via the Clerk

### **Clerk to the Parish Council:**

Mrs E L Arnold Crookes Cottage Wrangle Bank Boston PE22 9DL	<b>NEW NUMBER</b>	07466 656980
---	-------------------	--------------

**Parish e-mail address:** [stickneypc@aol.com](mailto:stickneypc@aol.com)

**Parish Website:** [stickney.parish.lincolnshire.gov.uk](http://stickney.parish.lincolnshire.gov.uk)

County Councillor:	Cllr Wendy Bowkett	01754 880388
District Councillors:	Cllr Tom Ashton	07812 522372
	Cllr Neil Jones	07577 957392

Police contact details:	Non emergency	101
	Emergency	999

**Email:** [spilsby.npt@lincs.pnn.police.uk](mailto:spilsby.npt@lincs.pnn.police.uk)

**Website:** [www.lincs.police.uk](http://www.lincs.police.uk)

**Twitter:** @SpilsbyPolice

Doctors phone number	01205 480237
Hospital phone number	01205 364801
Stickney Shop	01205 480225
Lilly's Ark – Animal Supplies and Farm Shop	07879 195862
Stickney Primary School	01205 480254
William Lovell Academy	01205 480352
Youth Centre and Village Hall bookings – Mr Gosling	01205 480641